




Cable glands for hazardous areas

Red Fibre Washer Metr., NPT


GFK thread seal

Material	Fiber reinforced Nylon
Operating Temperature	-60 °C – 105 °C




Size	Number	Size	Number
M 16	1.326.1600.50	1/2"	1.326.1200.70
M 20	1.326.2000.50	3/4"	1.326.3400.70
M 25	1.326.2500.50	1"	1.326.1000.70
M 32	1.326.3200.50	1 1/4"	1.326.5400.70
M 40	1.326.4000.50	1 1/2"	1.326.6400.70
M 50	1.326.5000.50	2"	1.326.2000.70
M 63	1.326.6300.50	2 1/2"	1.326.5200.70
M 75	1.326.7500.50	3"	1.326.3000.70

PVC Shroud



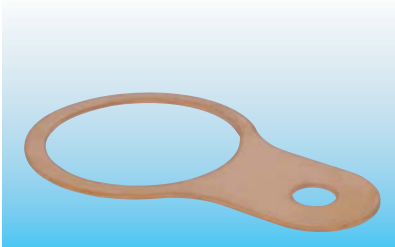
Material	PVC
-----------------	-----





Size	Number
20- 1	1.802.2000.50
20- 2	1.802.2000.51
20- 3	1.802.2000.52
25	1.802.2500.50
32	1.802.3200.50
40	1.802.4000.50
50	1.802.5000.50
63	1.802.6300.50
75	1.802.7500.50

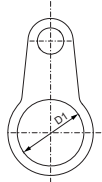
Cable glands for hazardous areas

Earthtag Metr., NPT




Material Brass  



Advice
- INOX on request

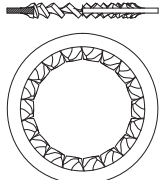


Size	Number	Size	Number
M 16	1.022.1600.50	1/2"	1.022.1200.70
M 20	1.022.2000.50	3/4"	1.022.3400.70
M 25	1.022.2500.50	1"	1.022.1000.70
M 32	1.022.3200.50	1 1/4"	1.022.5400.70
M 40	1.022.4000.50	1 1/2"	1.022.6400.70
M 50	1.022.5000.50	2"	1.022.2000.70
M 63	1.022.6300.50	2 1/2"	1.022.5200.70
M 75	1.022.7500.50	3"	1.022.3000.70

Serrated Washer Metr., NPT



Material INOX  



Size	Number	Size	Number
M 16	1.329.1600.50	1/2"	1.329.1200.70
M 20	1.329.2000.50	3/4"	1.329.3400.70
M 25	1.329.2500.50	1"	1.329.1000.70
M 32	1.329.3200.50	1 1/4"	1.329.5400.70
M 40	1.329.4000.50	1 1/2"	1.329.6400.70
M 50	1.329.5000.50	2"	1.329.2000.70
M 63	1.329.6300.50	2 1/2"	1.329.5200.70
M 75	1.329.7500.50	3"	1.329.3000.70

V-Ms-Ex-d

Metr., NPT

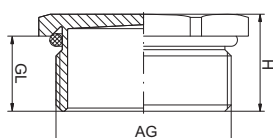


Material	Nickel plated brass
Protection	IP 68 – 10 bar / IP 69K (NEMA 6 – 150 PSIG)
O-Ring	Buna-N / FPM / VMQ
Operating Temperature	-20 °C – 95 °C (-4 °F – 203 °F) (Buna-N) -20 °C – 180 °C (-4 °F – 356 °F) (FPM), -60 °C – 180 °C (-76 °F – 356 °F) (VMQ)



II 2G 1D Ex d IIC

For the international certificates please see page 176 or our homepage www.hummel.com

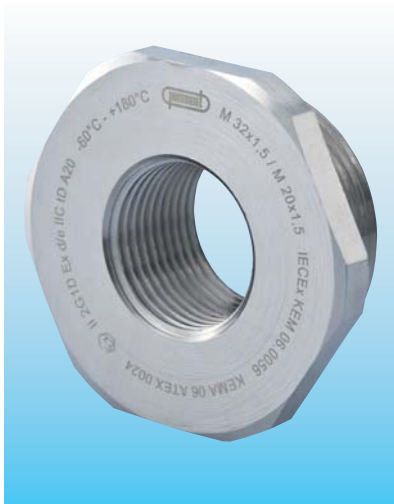


AG	GL mm	H mm	 mm	Number without O-Ring	Number Buna-N -20 °C – 95 °C (-4 °F – 203 °F)	Number FPM -20 °C – 180 °C (-4 °F – 356 °F)	Number VMQ -60 °C – 180 °C (-76 °F – 356 °F)
M 12 x 1,5	16	21	14		1.875.1200.50	1.876.1200.50	1.877.1200.50
M 16 x 1,5	16	20	19		1.875.1600.50	1.876.1600.50	1.877.1600.50
M 20 x 1,5	16	19,5	22		1.875.2000.50	1.876.2000.50	1.877.2000.50
M 25 x 1,5	16	19,5	30		1.875.2500.50	1.876.2500.50	1.877.2500.50
M 32 x 1,5	16	20,5	41		1.875.3200.50	1.876.3200.50	1.877.3200.50
M 40 x 1,5	16	21	46		1.875.4000.50	1.876.4000.50	1.877.4000.50
M 50 x 1,5	16	22	55		1.875.5000.50	1.876.5000.50	1.877.5000.50
M 63 x 1,5	16	22,5	70		1.875.6300.50	1.876.6300.50	1.877.6300.50
NPT 3/8"	16	20	16	1.877.3800.70			
NPT 1/2"	20	23,5	24	1.877.1200.70			
NPT 3/4"	20,5	24	30	1.877.3400.70			
NPT 1"	25	29,5	41	1.877.1000.70			
NPT 1 1/4"	26	31	46	1.877.5400.70			
NPT 1 1/2"	26,5	32,5	55	1.877.6400.70			

Ex accessories

RSD-MS-Ex-d

Metr.



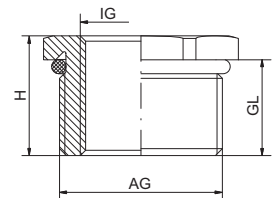
Material	Nickel plated brass
O-Ring	Buna-N / VMQ
Protection	IP 68 – 10 bar / IP 69K (NEMA 6 – 150 PSIG)
Operating Temperature	-20°C – 95°C (-4°F – 203°F) (Buna-N) -60°C – 180°C (-76°F – 356°F) (VMQ)



II 2G 1D Ex d IIC



For the international certificates please see page 176 or our homepage www.hummel.com



AG	IG	GL mm	H mm	⌀ mm	Number Buna-N -20°C – 95°C (-4°F – 203°F)	Number VMQ -60°C – 180°C (-76°F – 356°F)
M 16 x 1,5	M 12 x 1,5	16	19	19	1.878.1612.50	1.879.1612.50
M 20 x 1,5	M 12 x 1,5	16	19,5	22	1.878.2012.50	1.879.2012.50
M 20 x 1,5	M 16 x 1,5	16	19,5	22	1.878.2016.50	1.879.2016.50
M 25 x 1,5	M 16 x 1,5	16	19,5	30	1.878.2516.50	1.879.2516.50
M 25 x 1,5	M 20 x 1,5	16	19,5	30	1.878.2520.50	1.879.2520.50
M 32 x 1,5	M 16 x 1,5	16	20,5	41	1.878.3216.50	1.879.3216.50
M 32 x 1,5	M 20 x 1,5	16	20,5	41	1.878.3220.50	1.879.3220.50
M 32 x 1,5	M 25 x 1,5	16	20,5	41	1.878.3225.50	1.879.3225.50
M 40 x 1,5	M 20 x 1,5	16	21	46	1.878.4020.50	1.879.4020.50
M 40 x 1,5	M 25 x 1,5	16	21	46	1.878.4025.50	1.879.4025.50
M 40 x 1,5	M 32 x 1,5	16	21	46	1.878.4032.50	1.879.4032.50